

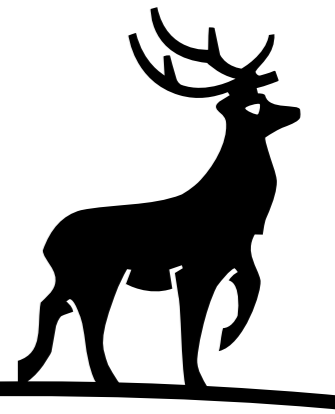
# Meadowbank, Kings Langley

Public Consultation: December 2023

Watford Community Housing are working in partnership with Hertfordshire County Council on a proposal to redevelop the former nursery school site. In a supported living setting, we are proposing to provide 4 new homes and associated communal facilities and space for staff.



watford  
community  
housing

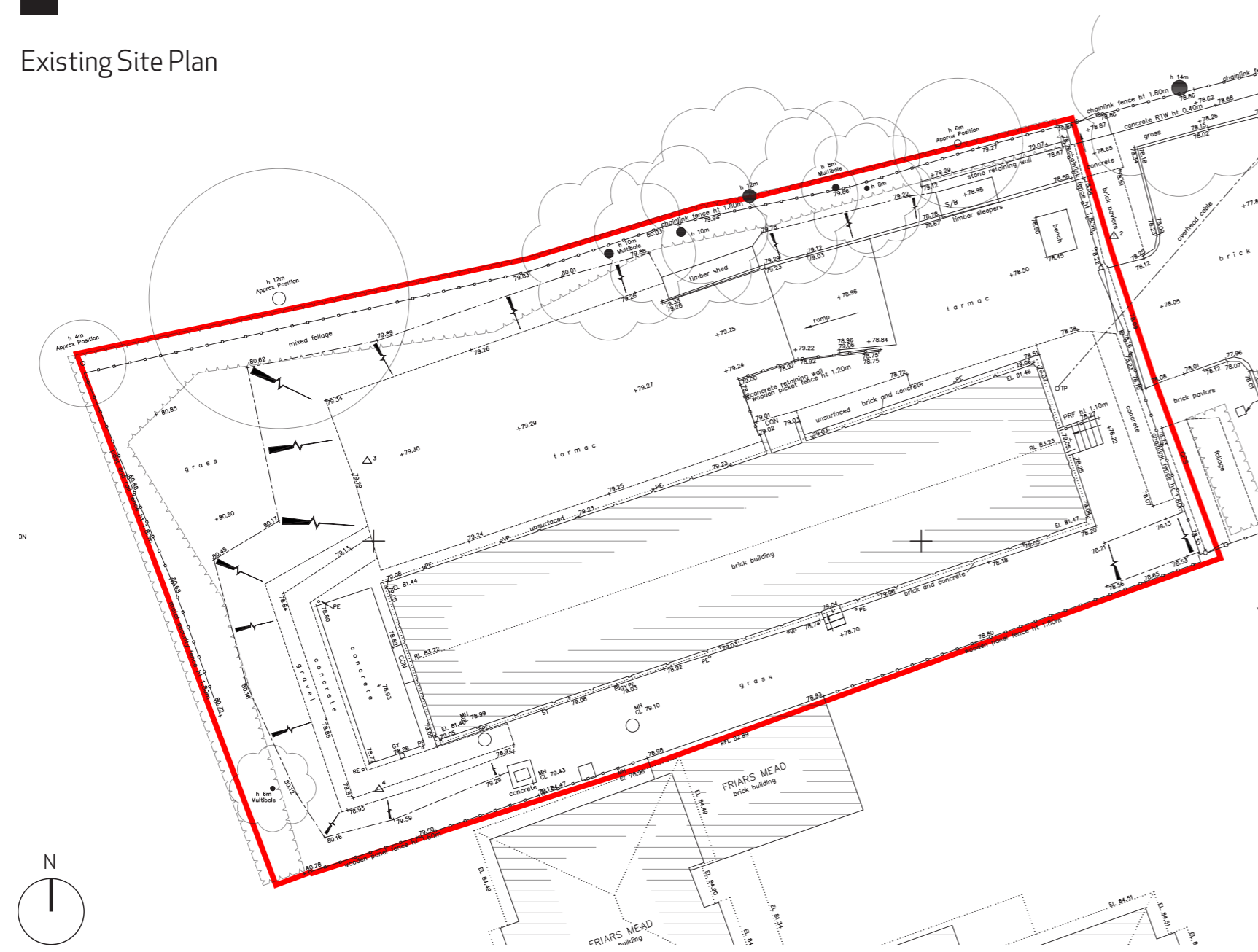


Hertfordshire

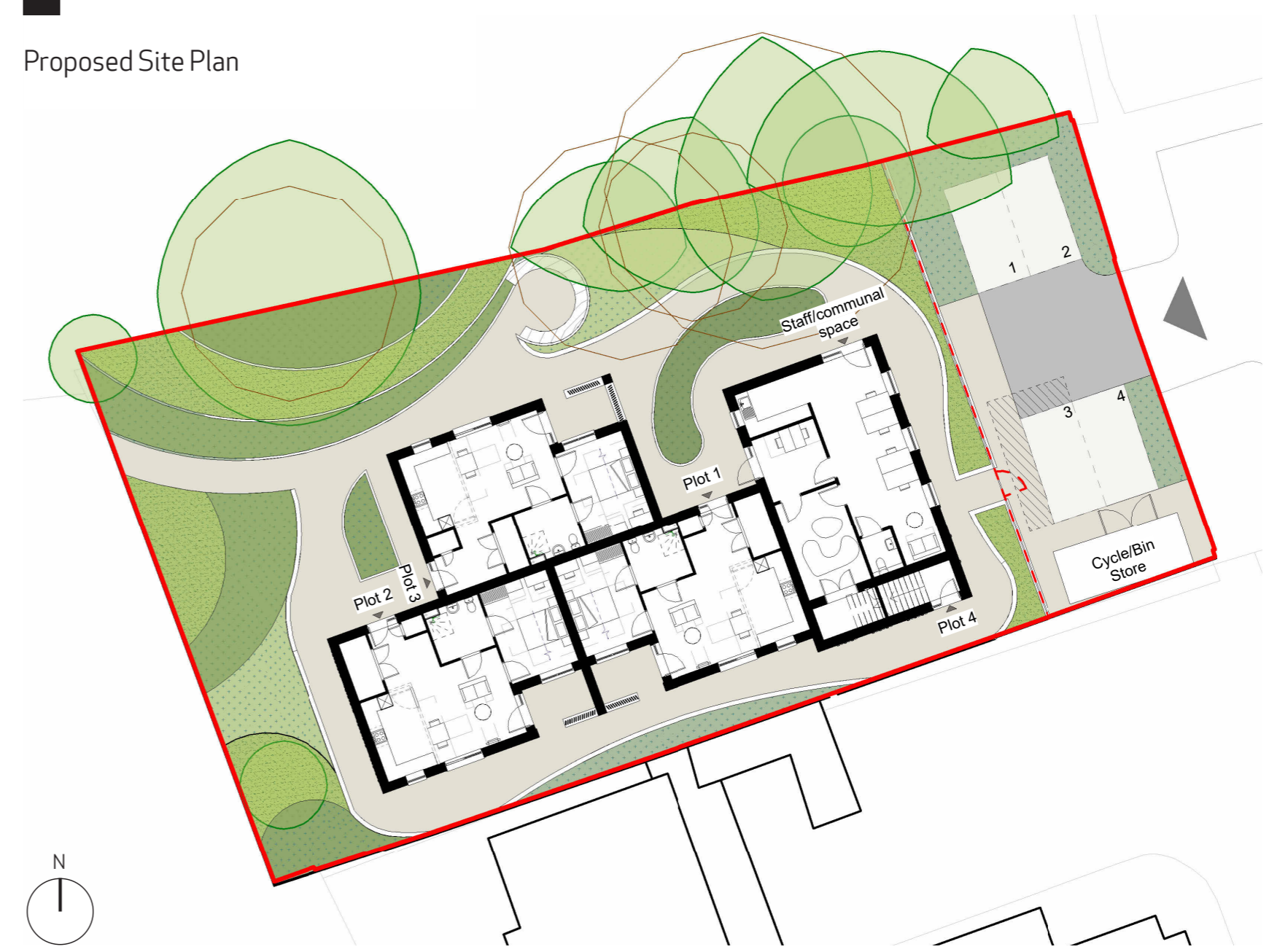
## Site Location & Site Photos



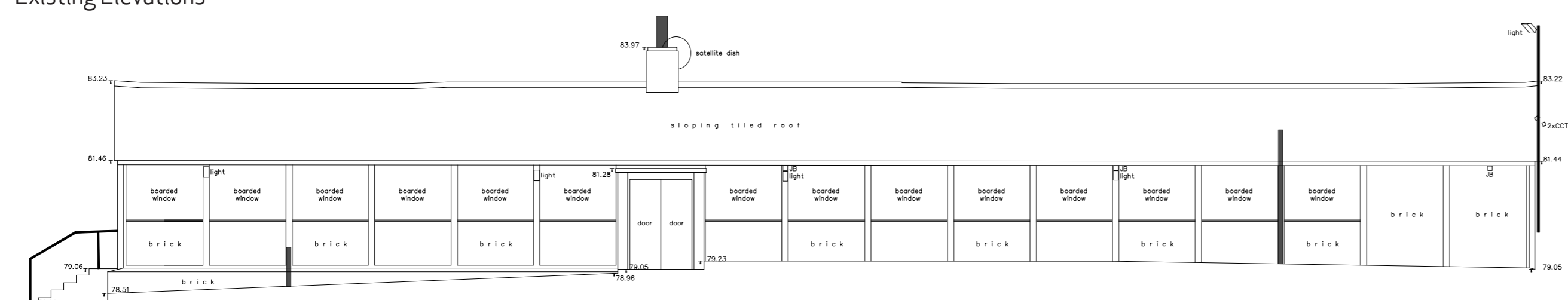
## Existing Site Plan



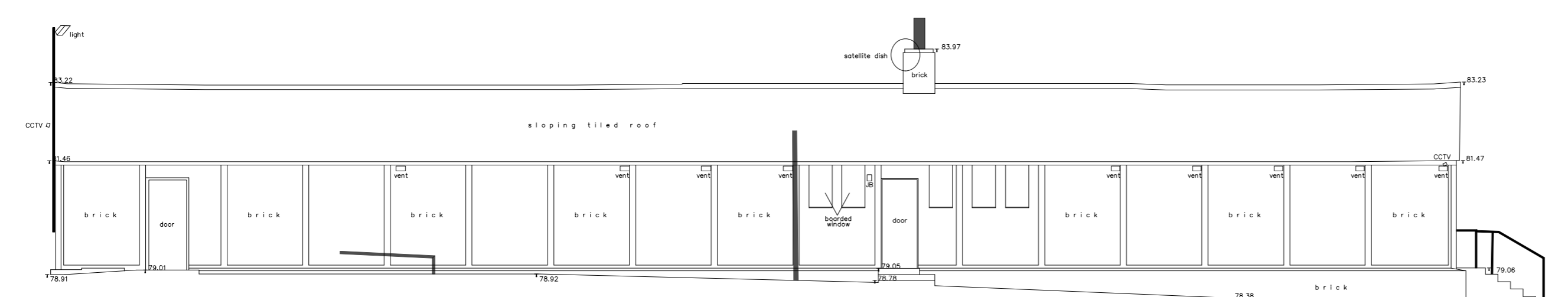
## Proposed Site Plan



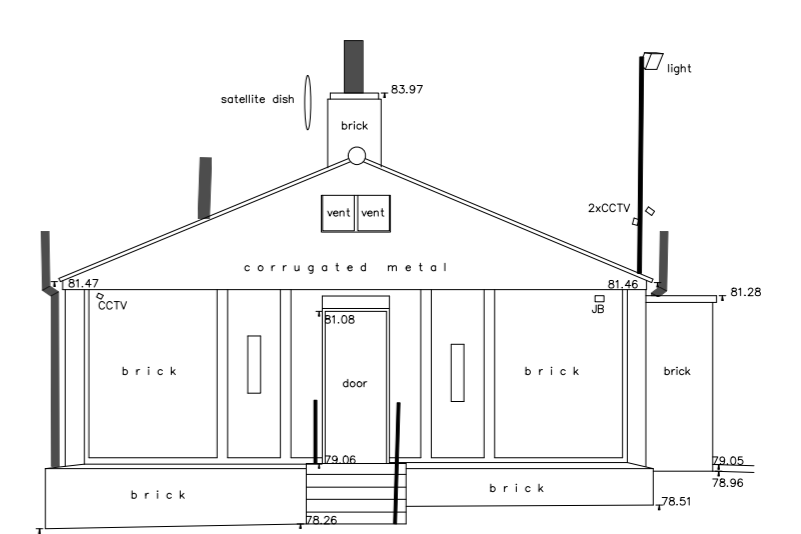
## Existing Elevations



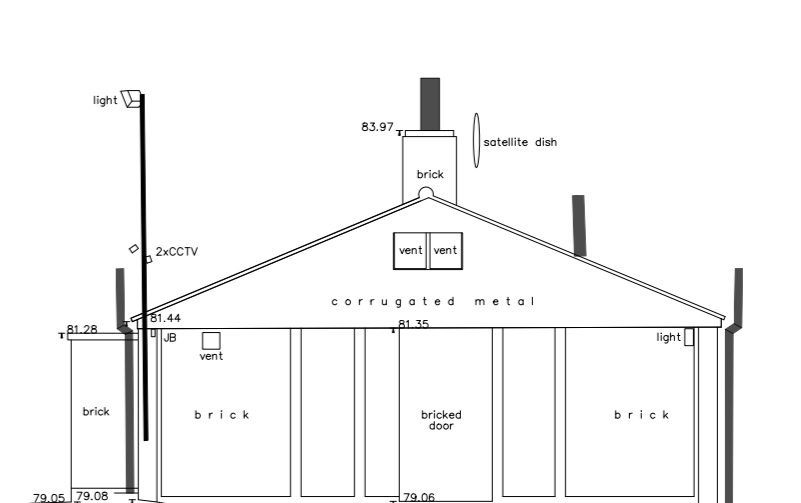
1. North Elevation



3. South Elevation



2. East Elevation



4. West Elevation

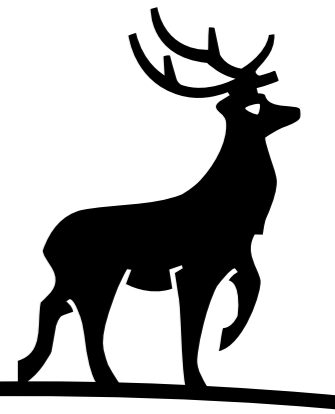
# Meadowbank, Kings Langley

Public Consultation: December 2023

Watford Community Housing are working in partnership with Hertfordshire County Council on a proposal to redevelop the former nursery school site. In a supported living setting, we are proposing to provide 4 new homes and associated communal facilities and space for staff.



watford  
community  
housing

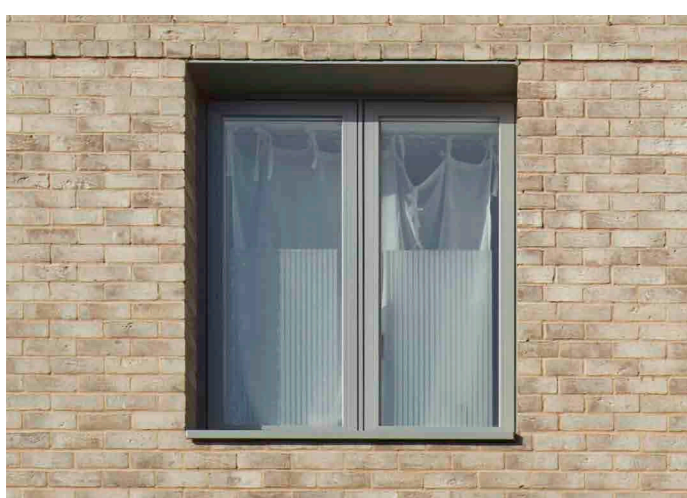


Hertfordshire

## Illustrative Perspective Sketches



Brown/Grey Brickwork



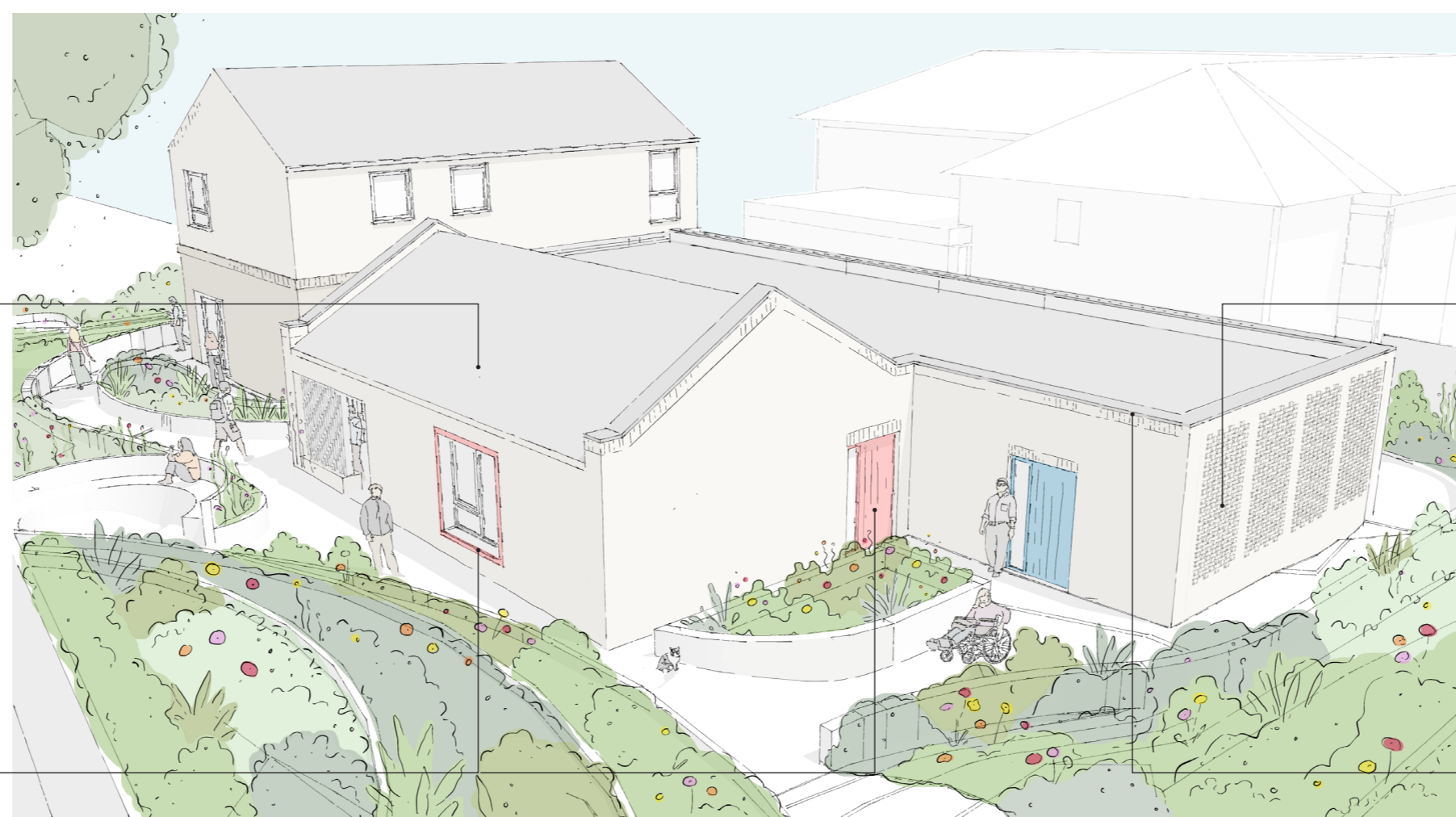
Light grey window frames



Dark grey roof tile



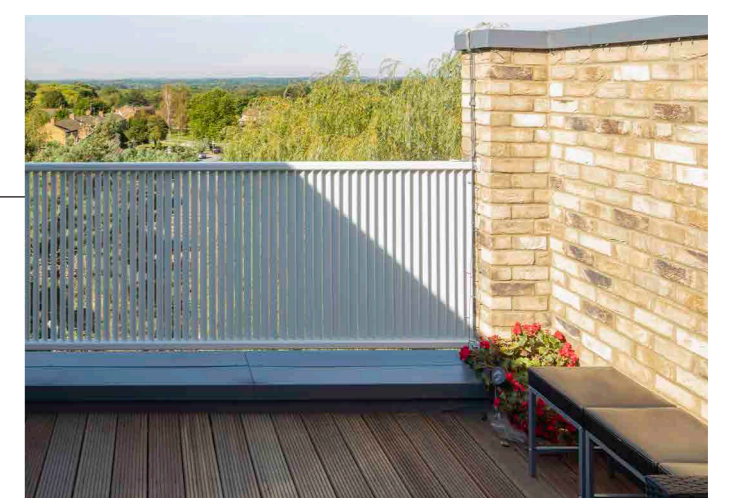
Coloured accents to selected doors and windows



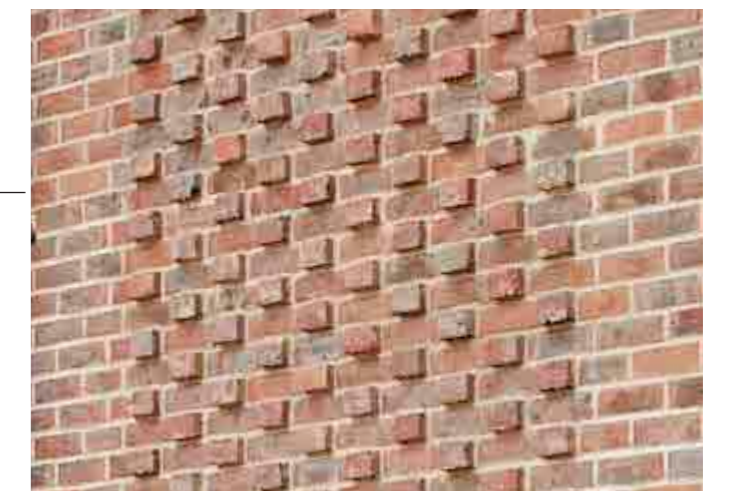
View from All Saints Church



Buff brickwork



Privacy screening

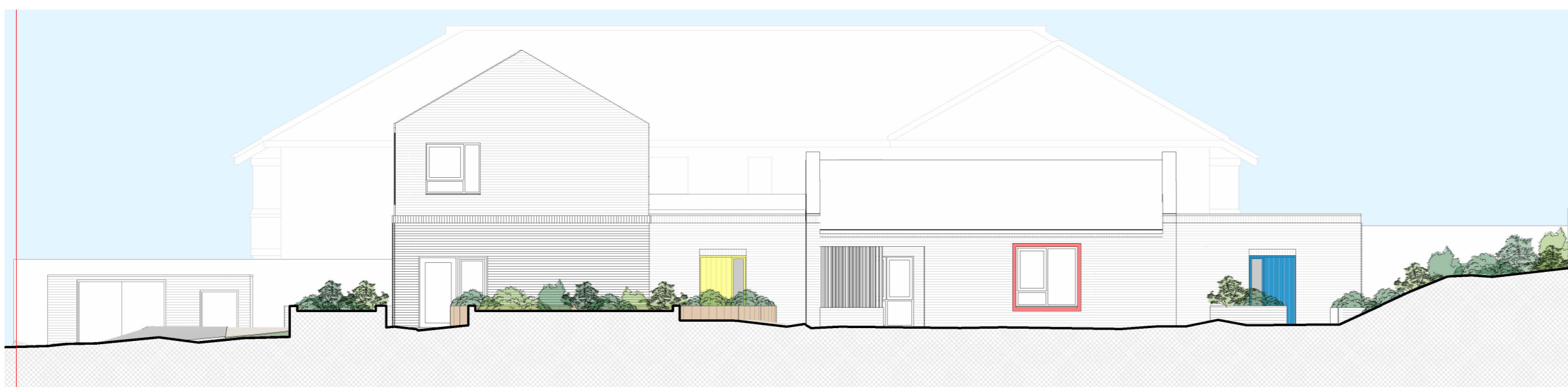


Textured brick detailing



Grey coping

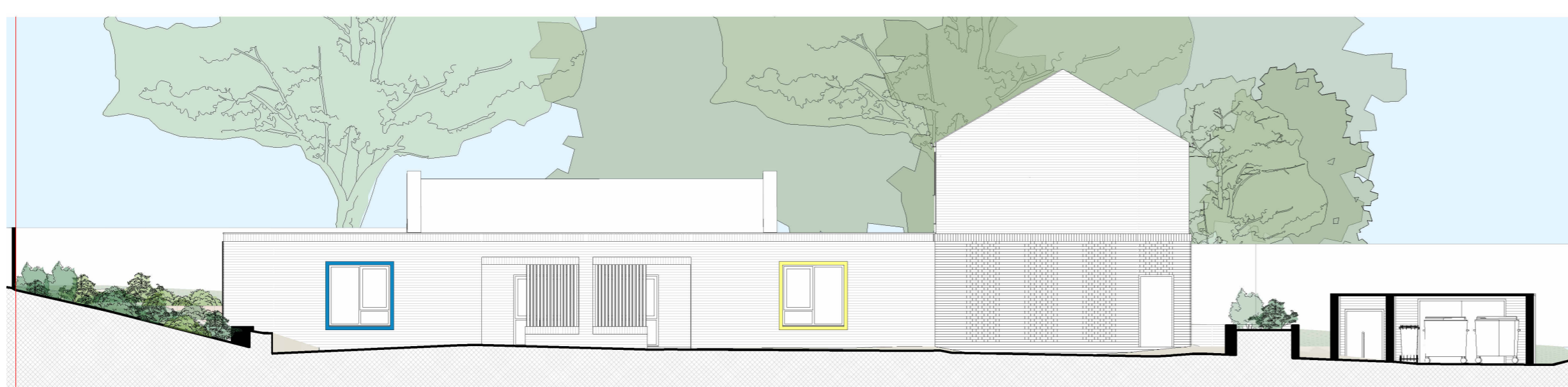
## Proposed Elevations



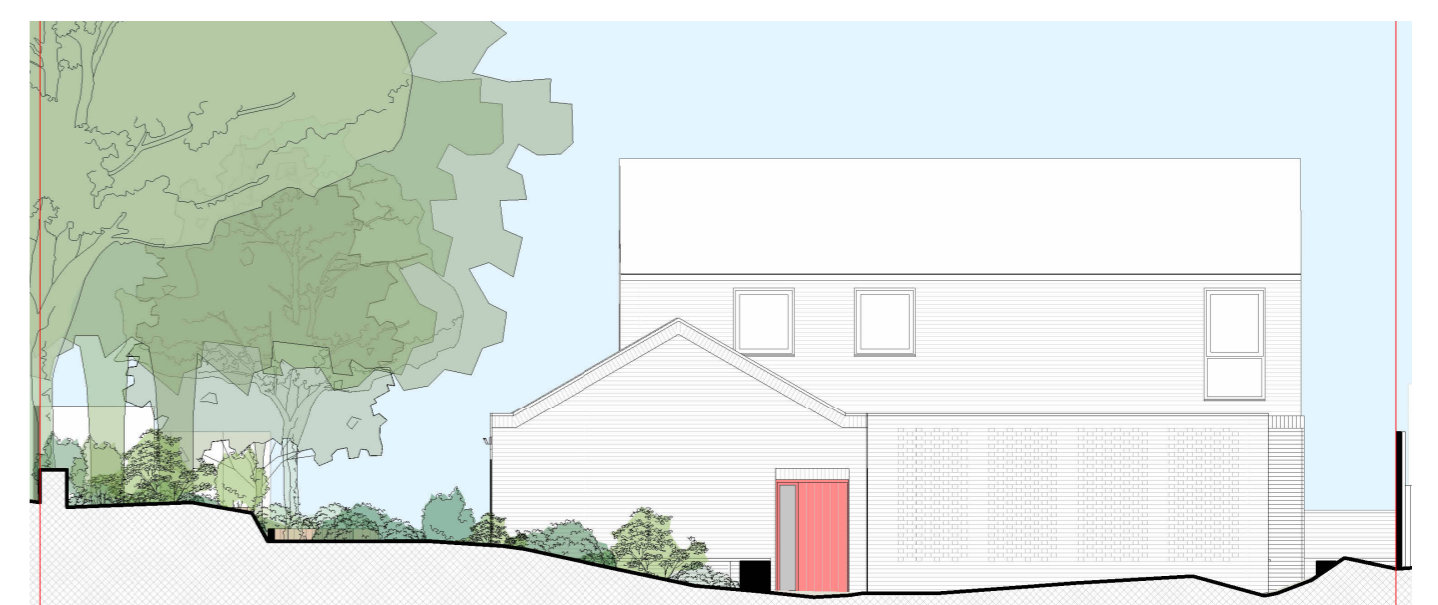
1. North Elevation



2. East Elevation (Front Facade)



3. South Elevation



4. West Elevation (Rear Facade)